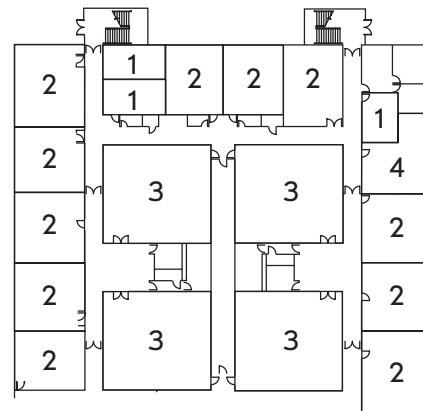
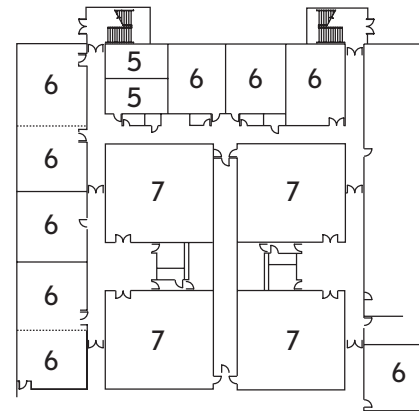


		DIMENSIONS	SQ FT	CEILING	TEAM	CLASS	CHEVRON	U-SHAPED	DOUBLE U	THEATRE	ROUNDS	CONFERENCE	DINER	RECEPTION
1ST FLOOR														
1	Small	14' x 23'	322	9'	-	-	-	-	-	-	8	10	-	-
2	Medium	27' x 27'	729	9'	24	18	-	18	-	24	32	16	-	-
3	Large	43' x 40'	1720	9'	60	96	60	29	46	200	72	28	-	-
4	Ex. Boardroom	27' x 27'	729	9'	16	-	-	-	-	-	-	-	-	-
2ND FLOOR														
5	Small	14' x 23'	322	9'	-	-	-	-	-	-	8	10	-	-
6	Medium	27' x 27'	729	9'	24	18	-	18	-	24	32	16	-	-
7	Large	43' x 40'	1720	9'	60	96	60	29	46	200	72	28	-	-
BALLROOMS														
8	Tiffany A	58' x 60'	3480	14'	-	200	-	-	-	400	250	-	250	500
9	Tiffany B	58' x 60'	3480	14'	-	200	-	-	-	400	250	-	250	500
8+9	Tiffany A & B	58' x 120'	6960	14'	-	440	-	-	-	800	500	-	500	1000
10	Essex	28' x 23'	644	14'	-	32	-	-	-	50	50	-	50	75
11	Lenox	28' x 23'	644	14'	-	32	-	-	-	50	50	-	50	75
10+11	Essex & Lenox	56' x 23'	1288	14'	-	80	-	-	-	150	100	-	100	150
12	Zachariah's	45' x 100'	4500	9'	-	-	-	-	-	-	-	-	200	250

1st Floor Meeting Rooms



2nd Floor Meeting Rooms



Ballrooms and Zachariah's

