

DIMENSIONS SQ. FT CEILING TEAM CLASS CHEVRON U-SHAPED DOUBLE U THEATRE ROUNDS CONFERENCE RECEPTION

1ST FLOOR

1	Small	14' X 23'	322	9'	-	-	-	-	-	-	8	10	-
2	Medium	27' X 27'	729	9'	24	18	-	18	-	24	32	16	-
3	Large	43' X 40'	1720	9'	60	96	60	29	46	200	72	28	-
4	Ex. Boardroom	27' X 27'	729	9'	16	-	-	-	-	-	-	-	-

2ND FLOOR

5	Small	14' X 23'	322	9'	-	-	-	-	-	-	8	10	-
6	Medium	27' X 27'	729	9'	24	18	-	18	-	24	32	16	-
7	Large	43' X 40'	1720	9'	60	96	60	29	46	200	72	28	-

BALLROOMS

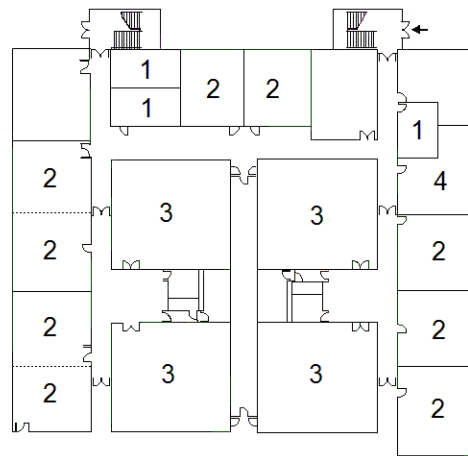
8	Tiffany A	58' X 60'	3480	14'	-	200	-	-	-	400	250	-	500
9	Tiffany B	58' X 60'	3480	14'	-	200	-	-	-	400	250	-	500
8+9	Tiffany A-B	58' X 120'	6960	14'	-	440	-	-	-	800	500	-	1000
10	Essex	29' X 23'	667	14'	-	32	-	-	-	50	50	-	75
11	Lennox	29' X 23'	667	14'	-	32	-	-	-	50	50	-	75
10+11	Essex & Lennox	58' X 23'	1334	14'	-	80	-	-	-	150	100	-	150
12	Terrace Reception Area	134' X 20'	2680	9'	-	-	-	-	-	-	-	-	-
13	Foyer Reception Area	180' X 36'	6480	9'	-	-	-	-	-	-	-	-	-
14	Zachariah's	45' X 100'	4500	9'	-	-	-	-	-	-	-	-	250



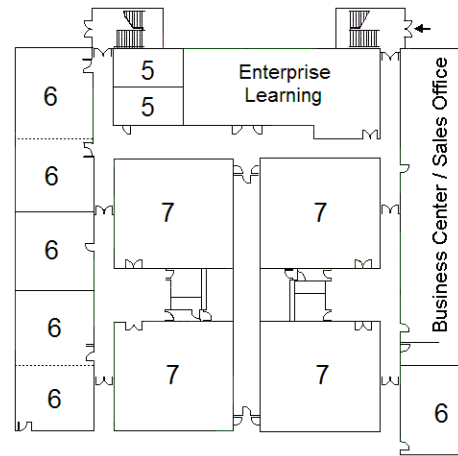
Norwood

1125 BOSTON-PROVIDENCE TURNPIKE
 ROUTE 1, NORWOOD, MA 02062
 TEL: 781.255.3159 FAX: 781.551.3552
 www.fourpointsnorwood.com

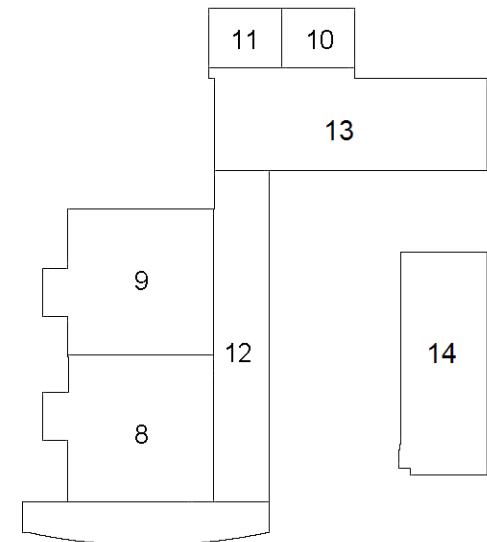
1st Floor Meeting Rooms



2nd Floor Meeting Rooms



Ballrooms and Zachariah's



For specific room numbers and specifications please contact your sales representative